

Folkestone – A Brighter Future

Newsletter Issue 1



**We are considerate
constructors**



We are registered with the Considerate Constructors Scheme
Call: 0800 783 1423 visit: www.ccscheme.org.uk



GOOD WORKS



To members of the public,

The works on Folkestone`s Levelling Up scheme have now begun. We have established our site compound located within the temporarily closed Foresters Way car park and have installed a lane closure for the duration of this phase, whilst we begin the installation of a new layby on Foresters Way. The bus stop located at Shellons Street eastbound will be temporarily suspended during this period, whilst we widen the road and install new footpaths in this location. We have also dug three exploratory holes to locate existing third-party utility services, one located along Foresters Way, and two along Shellons Street.

These current works are part of Phase 1 of the project, which we are aiming to have completed by May 2025. The scheme has been broken up into smaller phases, this will minimise disruption for the public and road users as much as practically possible.

Traffic Management

Foresters Way nearside lane has been partially closed with the outside lane fully open. Shellons Street westbound lane has also been closed with one lane still open to traffic throughout. Pedestrians will still be able to use the existing footpaths via temporary diverted routes and cycle ways. This will remain until late May 2025.

The footpath along Foresters Way will be reopened towards the end of May. During that period there will be pedestrian diversions, which will be located outside of Alford Bros motorcycle dealership and will direct you over the road towards Asda. During this period if pedestrians could please follow the diversions and refrain from entering cordoned off areas to ensure safety.

Please see below 2 photos of the footpath closed along Foresters Way:





Photo 1: In the first photo you can see the area closed off along Foresters Way with a pedestrian diversion sign pointing you in the direction of Asda.



Photo 2: In the second photo you can see a further 2 signs that will direct you towards the bus station, and down towards Lidl.

Progress update and upcoming works

Phase 1 of the project is progressing well and we will be commencing phase 2 towards the end of May. Phase 2 will be focusing on the improvements around Middelburg Square which will include the infilling of the two subways at the junction of Cheriton Road and Cheriton Gardens. We will also create a new signalised traffic junction which will be located at the Middelburg Square and Cheriton Gardens Junction. The layby along Foresters Way will be complete by this point, and the bus stop along Shellons Street eastbound will be open. There will be temporary traffic lights positioned in blocks located on Shellons Street. These will be here until further notice.

Community works

We attended the public engagement event organised by Folkestone & Hythe District Council at Folkestone Town Hall on Friday, April 4th, and Saturday, April 5th. During the event, we had the opportunity to meet numerous local residents who were invited to view the consultation boards outlining the project's phases, engage with the touch table showcasing the existing and proposed vision, and experience the newly delivered walkthrough.

We received lots of positive feedback from the public, many looking forward to seeing a refreshed town centre with 'the love' it needs. Some residents were relieved and felt this will draw more people back up to the town centre which will benefit shop owners, and make the town feel more alive again.

For more information on the roads scheme, please visit Kent County Council's website.

<https://www.kent.gov.uk/roads-and-travel/road-projects/planned-road-projects/folkestone-a-brighter-future>

For more information about Folkestone – A Brighter Future please visit Folkestone & Hythe District Council's website

<https://www.folkestone-hythe.gov.uk/homepage/112/folkestone-town-centre-regeneration>

For any further enquiries, please send an email to Folkestone@jackson-civils.co.uk or call the Jackson PLO on 07974 416435

Folkestone – A Brighter Future

Newsletter Issue 2



**We are considerate
constructors**



We are registered with the Considerate Constructors Scheme
Call: 0800 783 1423 visit: www.ccscheme.org.uk



GOOD WORKS

To members of the public,

The works on Folkestone Levelling Up scheme are underway, as you have been able to see we have recently been working along Foresters Way and Shellons Street. We have begun constructing new footways, installing kerbs and path edgings along these locations. In addition to this, we have installed tarmac to road widening areas.

We have completed trial holes for the new bridge span supports. This is due to a relocated position of the footbridge from the original plans owing to the presence of existing utility services. So far, our works have progressed as planned, and we are continuing to do our utmost to cause as little disruption as possible to the local area. Following public feedback, we have installed a controlled pedestrian crossing located at the start of Foresters Way and across the junction towards Asda. This is to ensure the safety of footpath and road users.



Please see the new temporary pedestrian crossing which is circled in red. We have since received positive feedback since these have been put into place.

Traffic Management

Traffic management on Foresters Way has remained the same with the nearside lane closed and the outside lane fully open. The Shellons Street westbound lane has also been closed with one lane open to traffic throughout. Pedestrians will still be able to use the existing footpaths via temporary diverted routes and cycle ways. This set up will continue until June 16th.

Traffic management has been set up on Middelburg West. Lane 1 has been removed to provide safe working space for Jackson Civil Engineering to complete the subway infill works.

Please always follow the footpath diversions.

Progress update and upcoming work

During June we will begin to install traffic management at these new locations; Radnor Park roundabout, for the completion of the new cycle ways and Middelburg Square West, Middelburg Square East, Shellons Street Westbound, and Middelburg Square South for the concrete infill to the pedestrian subways.

Progress Aerial Photo

Here you can see where the works have taken place inside of the site compound, the section of Shellons Street which is closed and on the right-hand side; Foresters Way.





Community works

We attended the Shepway Bus Users group at Folkestone Town Hall on Tuesday (3rd June) alongside Stagecoach and representatives from Folkestone & Hythe District Council to discuss the relocation of the bus stations.

We have also recently engaged with local charities and organisations and have discussed potential collaborations. We have also been in touch with local schools and are hoping to bring people together and put our exciting plans into place.

For more information on the roads scheme, please visit Kent County Council's website.

<https://www.kent.gov.uk/roads-and-travel/road-projects/planned-road-projects/folkestone-a-brighter-future>

For more information about Folkestone – A Brighter Future please visit Folkestone & Hythe District Council's website

<https://www.folkestone-hythe.gov.uk/homepage/112/folkestone-town-centre-regeneration>

For any further enquiries, please send an email to Folkestone@jackson-civils.co.uk or call the Jackson Public Liaison Officer on 07974 416435



Folkestone – A Brighter Future

Newsletter Issue 3



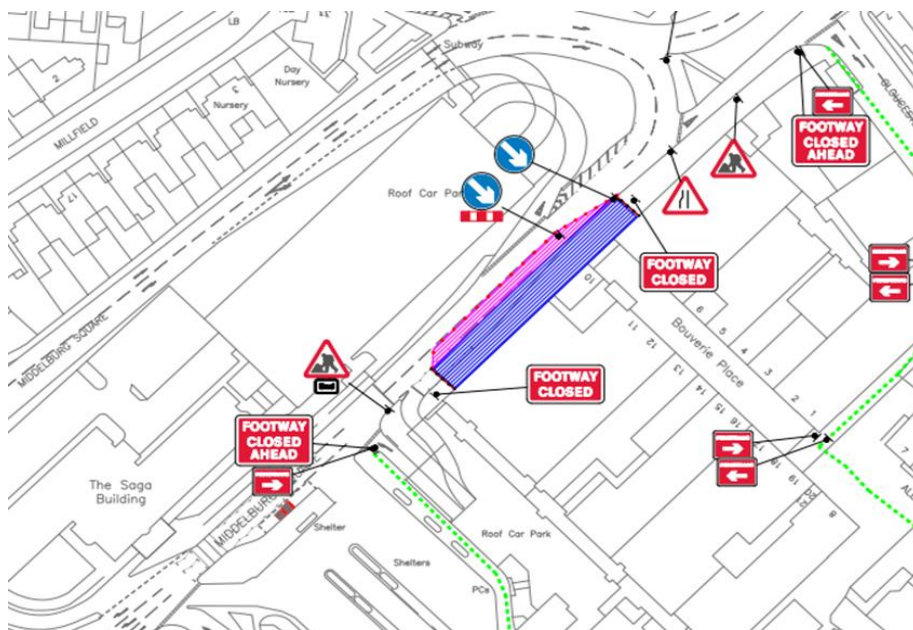
To members of the public,

There has been much more noticeable progress the past month in the Folkestone – A Brighter Future scheme, with the continuing work along Foresters Way and Shellons Street eastbound. Key activities during this period include the construction of new footpaths, kerbs and drainage systems, road surfaces and the establishment of our offices. We have managed to quickly carry out a lot of successful work and have much more planned for the upcoming months. Thank you all for your corporation and understanding while we carry out these works.

Traffic Management

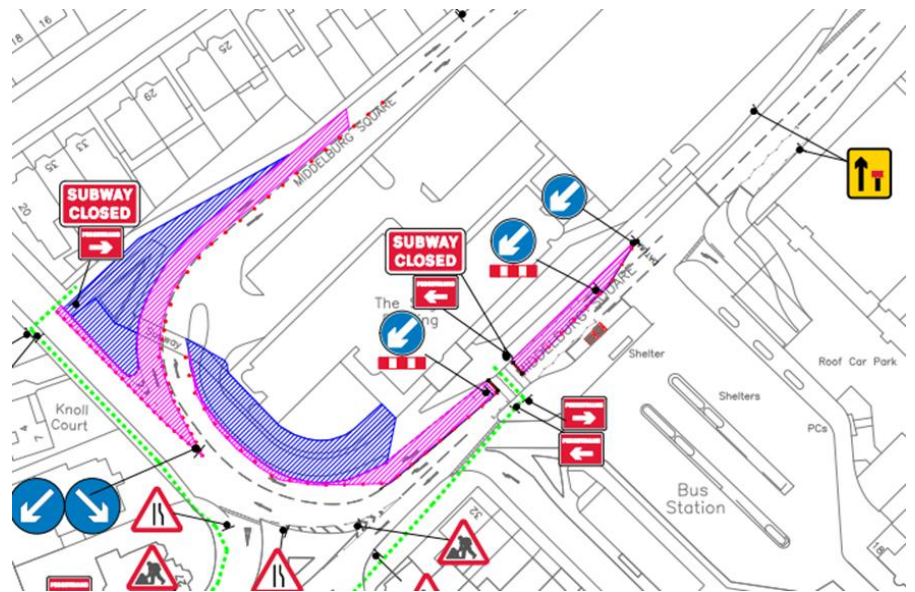
Traffic management along Radnor Park has been converted into a four-way controlled light system to allow the construction of footways and drainage. This controlled light system will be in place until mid-October 2025. The closure of Shellons Street Westbound and one lane on Foresters Way will remain until the first week in July 2025.

Middelburg Square south lane 1 and footway is currently closed, alongside Middelburg Square west lane 1, these lanes and footways are closed to construct the new bus stops and infill the pedestrian subway



Please see Middelburg Square South Lane 1 closure

Please see Middelburg Square West Lane 1 closure



Progress update and upcoming works

We have begun work along Middleburg Square East and West. So far, we have started to infill the subways and carry out UK Power Networks/ BT Openreach diversion works located in these areas. We have infilled and decommissioned the services situated in Middelburg Square West and have also started new footway works along Middleburg Square North. The infilling of Radnor Park roundabout islands is underway, and traffic lights have been set out to control traffic in this area.

We will also be installing traffic management for Shellons Street Westbound (outside Lidl), Middelburg Square East and Shellons Street Central Island, starting in the first week of July. SGN will be undertaking a gas diversion which will be taking place along Cheriton Road July 21st 2025 during which time some parking bays will have to be suspended. These temporary works are planned to take place for eight weeks. We appreciate the suspension of bays is inconvenient and thank you for your understanding whilst we complete these important improvements.

Progress aerial photos

Radnor Park Roundabout

Infill works of the islands located around Radnor Park Roundabout.



Middelburg Square West

The infilling of Middelburg Square West subways.



Community works

Jacksons attended The Shepway Bus Users Group at Folkestone Town Hall on June the 3rd alongside Stagecoach and Folkestone and Hythe District Council, main topics for discussion included the bus stations relocation and address attendees' concerns.

We have been in contact with a local primary school and have been invited to host an assembly for the whole school which we are very much looking forward to. We have also recently engaged with local charities and organisations and currently discussing potential collaborations.

For more information on the roads scheme, please visit Kent County Council's website.

For more information about Folkestone – A Brighter Future please visit the Folkestone & Hythe District Council website: folkestone-hythe.gov.uk/FABF

For any further enquiries, please send an email to Folkestone@jackson-civils.co.uk or call the Jackson Public Liaison Officer on **07974 416435**

Folkestone – A Brighter Future

Newsletter Issue 4



To members of the public,

As you are aware the Folkestone 'A Brighter Future Scheme' has progressed significantly in July. We have successfully switched traffic management along Shellons Street, erected safety fencing - including lane closures to Shellons Street westbound - and have installed further footway signage in this area. The original lane along Foresters Way has now been closed off and is now currently being used as a compound/ storage area.

Traffic Management

We are currently working on Phase 2B of the scheme at Radnor Park roundabout, the four-way lights will be in place till October. Lane two and the island crossing located at Middelburg Square East will remain closed. The lane closure of Middelburg Square South is ongoing till September and works along Shellons Street westbound (outside Lidl) will continue until mid-August 2025.

The latest traffic management plans can be found at folkestone-hythe.gov.uk/fabf-phase-two

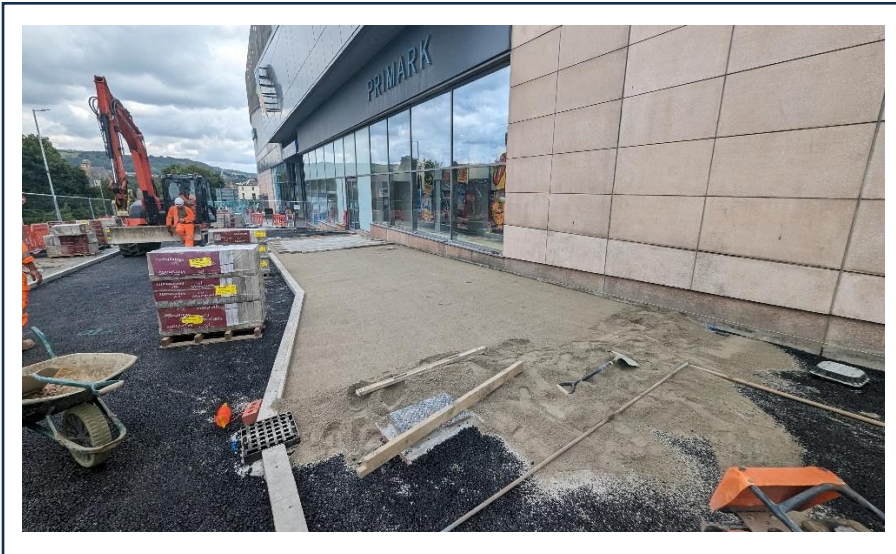
Progress update and upcoming works

Phase one of the island infill works at Radnor Park roundabout is now complete and we are progressing with the footway works. We are aiming to have completed enough work to remove the four way-controlled traffic lights by mid-October 2025. We have successfully dug out trial holes along Radnor Park roundabout for buried services, switched the traffic management, and erected safety fencing. We have done this so we could complete footway works outside of The Park Inn. removing unnecessary kerbs and footways and replacing these with new materials.

We have also now successfully completed the subway infills in and around Middelburg Square. Both pedestrian subways have been filled with foam concrete, facilitating the construction of the new Bellmouth junction and a signalised crossing at Middelburg West. We are currently carrying out gas diversion works along Cheriton road to complete our excavation for a rain garden in this area. This work started on 21 July and is expected to continue for a total of eight weeks. =

We have made progress with the construction of the widened footways for the new bus stops along Middelburg Square South. The bus station will now close on the 20th of September 2025. Signage and temporary stops will be put in place to ensure any service disruption is kept to a minimum.

Progress Photos



Widening of footways located at Middelburg Square South for new bus stops.

There is now one lane of traffic along Shellons Street, here you can see where we are in the process of widening the footpath for a safer pedestrian crossing.



Here we are breaking out redundant footways by Radnor Park roundabout, these will be replaced with new materials.



Community works

Jackson Civil Engineering attended St Eanswythes Primary school on the 1st of July and conducted a site health and safety assembly for the whole school. Two Public Liaison Officers and one of our engineers from the southern region talked to the pupils about the potential dangers of construction sites. Many pupils engaged in this activity and understood how they can stay safe. We have also been engaging with local charities and have much more planned for the near future.

For more information on the roads scheme, please visit Kent County Council's website.

<https://www.kent.gov.uk/roads-and-travel/road-projects/planned-road-projects/folkestone-a-brighter-future>

For more information about Folkestone – A Brighter Future please visit Folkestone & Hythe District Council's website www.folkestone-hythe.gov.uk/FABF

For any further enquiries, please send an email to Folkestone@jackson-civils.co.uk or call the Jackson PLO on 07974 416435



Folkestone – A Brighter Future

Newsletter Issue 5



Gas diversion works located along Cheriton Road.

To members of the public,

As you may be aware, our works around Shellons Street have advanced significantly, with new footpaths and crossing points put into place and opened for public use, and a tabletop crossing to prevent vehicles from speeding. You may have seen we have begun working along Sandgate Road in the town centre adjacent to Costa.

Unfortunately, as part of the improvement works it is necessary to remove a small number of trees. Two of these have been removed already and the remaining two trees will be removed once nesting birds are no longer present. Nine semi-mature trees - five *Acer rubrum* "Redpointe" and four *Prunus padus* - around five metres in height will be planted in the area instead alongside new planters with flowers and new seating. This will enhance that area of town, creating a more attractive and inviting environment, to enhance the user experience, which we are hoping will bring the community together, and attract more people to this area of town.

Traffic Management

From mid-September the Shellons Street westbound nearside lane will be closed with one lane open to traffic. Temporary road signals will be used at Gloucester Place with on demand sensors operating for exit to ensure traffic from Shellons Street moves as freely as possible. Pedestrians will be able to use existing footways and cycleways. If these dates change, a traffic management update will be issued, and the district council will be informed to ensure their webpage is updated.

In the upcoming weeks we will begin drainage works at Middelburg Square East. This requires the closure of the nearside lane next to Alford Bros Motorbike Shop and the end of Cheriton Road. There will be one lane of traffic open throughout; pedestrians will be able to use existing footways/cycleways and temporary footways in closed areas. There will be bespoke delivery access/ general access arrangements for 22 to 30 Cheriton Road and Alford Bros Shop throughout. We will provide notice to residents, involving a detailed letter drop, containing exact dates and details of works.

In the next few weeks, you will see the outside lane closed on Middelburg Square East and Foresters Way to enable works with one lane open to traffic throughout. For the first couple of weeks of September the nearside lane of Middelburg Square North adjacent to old Saga building and Millfield Road will be closed to enable works, with one lane still open to enable traffic

throughout on temporary alignment. The public carpark also remains open throughout. Pedestrians will be diverted along footways in Millfield Road.

Closure of Folkestone bus station

As you probably know Bouverie Square is returning to its former use as a garden square and a new linear bus station is being created.

The current Folkestone bus station will close on Saturday 20 September. To minimise service disruption temporary bus stops will operate from 21 September while this work is completed.

Stagecoach has created a diagram displaying the positions of these new temporary stops and the routes using them. [You can view this diagram and find out more about bus services on the dedicated page on the Stagecoach website.](#)

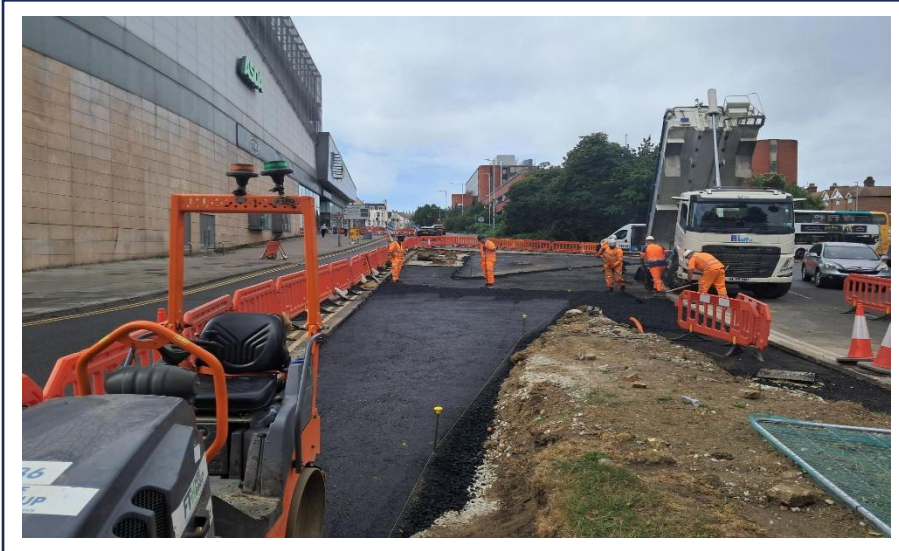
Other progress

We have successfully infilled the two subways which are located around Middelburg Square. At Middelburg Square West we have begun constructing a new road and will begin installing new kerbs during the next few weeks. Over the next month at Middelburg Square North the works will be completed, the ground will be levelled up, planters containing flowers/ greenery will be put into place, and the safety fencing will be taken down. At Middelburg Square South we have begun constructing a new footpath which is almost complete and will soon be installing new kerbs. The next phase of the works at Middelburg Square South will consist of installing new block paving and extending the footpath and planters. We are aiming to have this complete by the end of September.

Our works at Radnor Park roundabout are progressing, with newly constructed footpaths put into place. As a result of the recent overnight works, we have completed laying the first layer of asphalt on the road in that area before the installation of the cycle lanes. We will then begin laying the final layer in the coming month during the nighttime closures. There will be ample notice of these nighttime closures provided and an update containing a detailed description with dates will be sent out regarding these works. We are currently negotiating existing services before the footpath works commence on the side of Radnor Park roundabout that is closest to the train station. All works around Radnor Park roundabout will be complete by the end of October 2025.

The gas diversion works along Cheriton Road will soon be complete. The old gas main has been made redundant, and the new gas main is now live. The back filling of the excavations will be undertaken this weekend, and the completion of the road surface will be complete the first week of September. The next phase of these works which entail the excavation for the rain gardens which will start in the first few weeks of September

Progress Photos



Here we are installing a temporary road by Middelburg Square Island while we construct and relocate a new lane.

Newley resurfaced footways adjacent to the Saga building/bus station.





Community works

The past month we have been engaging with local businesses, providing advanced notices of upcoming works and delivering transparent and communicative information. With constant engagement we have been able to receive feedback from local businesses, and residents. People have raised their concerns and have also provided much positive feedback about not only the works, but the site team members on the ground. If you have any concerns or queries or would like to know more about the scheme, please reach out to our local Public Liaison Officer. We would like everyone to feel a part of this scheme and have their voices heard.

For more information on the roads scheme, please visit Kent County Council's website.

www.kent.gov.uk/folkestoneabrighterfuture

For more information about Folkestone – A Brighter Future please visit Folkestone & Hythe District Council's website: www.folkestone-hythe.gov.uk/FABF

For any further enquiries, please send an email to Folkestone@jackson-civils.co.uk or call the Jackson PLO on 07974 416435.



Folkestone – A Brighter Future

Newsletter Issue 6



Middelburg Square West.

To members of the public,

The Folkestone - 'A Brighter Future' scheme has progressed significantly in the past few months. The temporary bus station has been operational with the opening of the pathway located at Middelburg Square South.

Temporary flag poles have been erected adjacent to Primark, and new timetables have been provided by Stagecoach.

Shelters are coming for this temporary set up and will themselves be an interim solution until the new permanent 'living roof' shelters arrive later in the project. Bauer Media Outdoor (BMO) were awarded the Concession Contract for the Supply and Maintenance of Passenger (Bus) Shelters and Advertising. Unfortunately, they have been let down by their overseas supplier resulting in a frustrating delay. Council officers reacted quickly knowing the impact this would have on bus users and have been liaising with BMO to find an interim solution. The good news is that BMO plan to provide brand new interim bus shelters for the temporary bus stops. Urgent discussions are being held to work out the implementation plans, with all efforts being made for an installation date in October.

We continue to work with Stagecoach to minimise disruption to operations and their bus users and will deliver modifications to the traffic management when identified. Folkestone bus station has now closed permanently and has since been fenced off. We have begun to store materials needed for the works and our next step is to dig trial holes for potential utility diversions.

Temporary flag poles and new paving adjacent to Primark.





Works along Sandgate Road – there is still access to shops along either side of the area being worked on. These works will continue throughout November.

Traffic Management

We have started drainage works along Cheriton Road, which involve the installation of rain gardens. Cheriton Road will be narrowed in a similar fashion to the recent gas diversion along Cheriton Road whilst we carry out these works. A live running lane will always be provided to facilitate traffic flow. The junction of Coolinge Road to Cheriton Road will now be closed from the 9th October until the 21st October to facilitate these works. The junction of the Broadmead Road adjacent to The Park Inn pub will be closed from the 13th October until the 17th October as the existing junction is improved. Letters have been distributed to residents advising of the works.

Progress update and upcoming works

Along Sandgate Road we have removed existing guardrails, benches, cycle racks and bollards, broken out granite paving, and investigated services. These works have taken place so we can construct planters, plant new trees and excavate to new levels to install tree anchors. In upcoming weeks, we will undertake a site clearance of the area in preparation for installing the new footway. Advanced warning and a pedestrian diversion will be provided prior to works starting. Access will always be provided to residents and businesses, with sufficient space for emergency vehicles, while we complete these works.

At Middelburg North we have installed new kerbs and edgings, footway base, binder and surface course. In October we will start the new footway works at Middelburg North and along Middelburg

South. We have started works along Shellons Street Westbound by breaking out the carriageway for new kerbs. We will then begin phase 2C of the works at St Eanswythe Way; these works entail the completion of raised tabletop works and a new footway. At Shellons Street Eastbound Bauer Outdoor Media will install the new bus shelter in this location, once this is in place we can then complete footway surfacing in that area.

Over the next month at Radnor Park, we will be switching our works over to the opposite side of the roundabout (adjacent to The Park Inn) so we can complete the final surfacing of the footways and cycleways. We will then install conservation kerbs and planter walls as well as new bollards. You will then see new traffic signals and a new zebra crossing. Works at Radnor Park will now be complete mid-November due to unforeseen conditions causing a change in scope

Progress Photos



New kerbs and footways being installed along Middelburg North.

New island works at Radnor Park roundabout.





New kerbs and works for cycleways near Radnor Park roundabout.

Community works

In September, we frequently engaged with local businesses and stakeholders, providing up to date information and addressing any concerns and queries. We have been liaising with The Beacon School and have an upcoming meeting with them early this month which we are looking forward to.

If you have any concerns or queries or would like to know more about the scheme, please reach out to our local Public Liaison Officer. We would like everyone to feel a part of this scheme and have their voices heard.

For more information on the roads scheme, please visit Kent County Council's website.

www.kent.gov.uk/folkestoneabrighterfuture

For more information about Folkestone – A Brighter Future please visit Folkestone & Hythe District Council's website www.folkestone-hythe.gov.uk/FABF

For any further enquiries, please send an email to Folkestone@jackson-civils.co.uk or call the Jackson PLO on 07974 416435

Folkestone – A Brighter Future

Newsletter Issue 7



Students from Folkestone Academy, Jackson team members and Folkestone's local MP Tony Vaughan.

To members of the public,

We would like to start by thanking you all for your cooperation and understanding so far throughout the Folkestone - A Brighter Future Scheme. Works have progressed significantly the past month; as you may be aware the previous bus station is now closed, and we have begun to store materials needed for our works. We have now switched traffic management at Middelburg Square South and have erected safety fencing, diverting traffic through the redundant bus station. This will continue for two weeks while we carry out carriage way works.

Radnor Park roundabout update

Over the past month we have successfully carried out footway surfacing and installed tactile paving to the islands at Radnor Park roundabout, bollards for a toucan crossing have also been installed in this area. We successfully completed the junction improvements at Broadmead Road, which involved the closure of this junction for five consecutive working days. We have laid tarmac to the face of kerbs and have installed topsoil to all planted areas.

We have erected traffic management and have provided a diversion for upcoming overnight works at Radnor Park roundabout. From the 3rd of November until the 7th of November the roundabout will be closed in the evenings from 20:00PM until 05:00AM. During these works we will be surfacing the area for a total of three nights, the remaining two nights will be used for white lining. Works at the roundabout will be complete by mid-November.



Improved junction works at Radnor Park roundabout.

Middelburg Square update

At Middelburg Square East we have successfully switched traffic management and have erected safety fencing, broke out and excavated existing tarmac to carry out drainage works. Vacuum excavation took place near live services and asphalt was reinstated to the road. We have begun to install new kerbs adjacent to Alford Bros Motor Bike Shop and over the next upcoming weeks we will begin installing block paving. Unfortunately, there have been some setbacks caused due to buried services (water mains, power lines etc) clashing which has caused drainage issues. We aim to have these works completed by mid-November.

We have recently begun breaking out redundant kerbs and footways at the entrance/exit of the NCP (Asda) carpark which were carried out overnight to cause as minimal disruption to road users as possible. To complete these works, there will be further overnight works which will take place through November.



Raised tabletop crossing at Middelburg West.

Cheriton Road/Shorncliffe Road Junction update

At Cheriton Road we have broken out redundant footways located along Cheriton Road, installed new edgings and resurfaced the area. Cheriton Road has been slightly narrowed but capacity has not been affected. The end junction of Coolinge Road has recently been closed with traffic diverted via Brockman Road/Guildhall Road North. Adjacent to the junction (Cheriton Road) approximately 10 parking spaces have been suspended opposite the work area, the suspended spaces will gradually migrate further along the road while the works progress. The junction improvement works at Coolinge Road are now complete and the road is now accessible for road users and pedestrians. The rain garden works will be complete by April 2026.

Along Shorncliffe Road Junction we have begun narrowing lanes, switched traffic management and have erected safety fencing. Over the upcoming weeks, we will break out redundant kerbs, footways, and railings. Once this is complete, in the early weeks of November we will install new kerbs and edgings, install new Belisha Beacons/ signs, and will the resurface the footways. Around mid-November we will then commence the installation of rain gardens; we will be working in multiple traffic management phases in this area until March 2026.

Community works

Over the past month Jackson Civil Engineering have had the pleasure of attending a business breakfast meeting at The Beacon, they got to meet several students that made all guests feel very welcome and got to hear all exciting opportunities the school has the offer.

A team from Jackson, working on the Folkestone – A Brighter Future scheme, recently visited Folkestone Academy's new skate park to donate skateboards to the school's skateboarding club. The skateboards were assembled and designed by engineers at Jackson Civil Engineering during a recent team-building exercise in collaboration with O3E to celebrate Engineers Day. A total of 16 skateboards designed by the engineers were distributed across the company's four regions.

Folkestone Academy's skate park is one of several initiatives designed to promote sporting activities within the Turner Schools Trust, and was nominated by O3E to receive the four skateboards for the Southern region, in recognition of its status as the first skate park within a school premises and the commitment of the management team to providing outdoor sporting facilities that encourage young children's participation in sports locally.



For more information on the roads scheme, please visit Kent County Council's website.

www.kent.gov.uk/folkestoneabrighterfuture

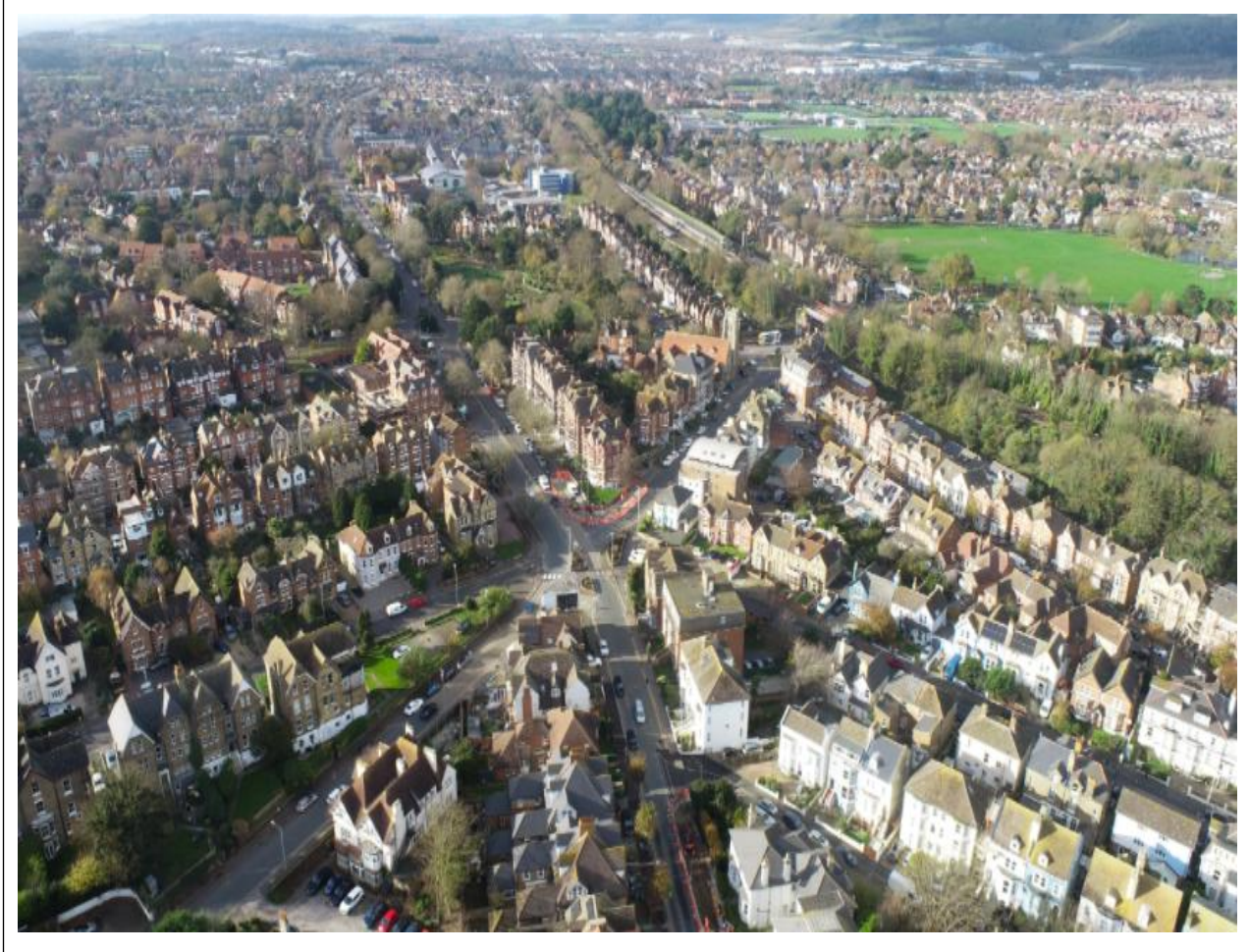
For more information about Folkestone – A Brighter Future please visit Folkestone & Hythe District Council's website www.folkestone-hythe.gov.uk/FABF

For any further enquiries, please send an email to Folkestone@jackson-civils.co.uk or call the Jackson PLO on 07974 416435



Folkestone – A Brighter Future

Newsletter Issue 8



Aerial shot of Cheriton Road/ Shorncliffe junction.

To members of the public,

The Folkestone – A Brighter Future project has been progressing well in November. Please find our latest updates below:

Radnor Park roundabout

As you may be aware, the lights at Radnor Park roundabout have now been removed and traffic is flowing as normal. Over the past month, overnight works took place to resurface the area and complete the new road markings. New planter islands were also built with topsoil ready for landscaping works which will be carried out in March 2026. Ample notice will be given to residents before further works are carried out.



New zebra crossing, and Belisha beacons have been installed, creating safer crossing points, and cycle lanes.

Newly constructed planters, and prepared topsoil

Shellons Street/ Guildhall Street

Works are progressing well with new granite paving being installed along the street and at shop entrances. This repaving work will continue throughout December. Access will be provided to pedestrians and for loading, and all shops will be informed before these works go ahead.

A brick culvert was found during excavations in Guildhall Street which has caused a slight delay. An archaeological watching brief is in place for the works for any excavation works that exceed one meter. The rationale for this requirement is due to the urban environment and the fact that most of the excavation works are shallow and/or in made ground, ground that has been previously excavated. However, if any significant items are identified within excavations of any depth works will be halted

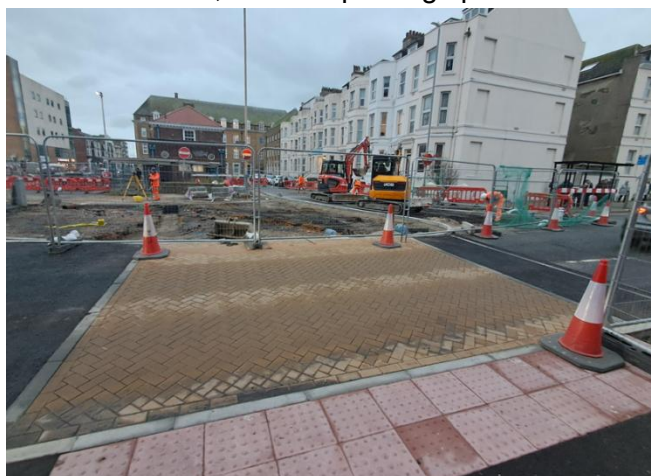
until an archaeologist has reviewed and cleared works to start again. An archaeologist is currently on site observing and recording the rain gardens works currently underway along Cheriton Road. The archaeologist is also monitoring the excavations taking place at the junction of Guildhall Street and Shellons Street and in Sandgate Road. Other finds have included small wall fragment, a lime mortar wall fragment which had a curved element and was rendered on the inside and a brick culvert on Sandgate Road. Updates about further findings will be published in future newsletters/ updates.

Middelburg Square

Over the past month at Middelburg East, we have been carrying out drainage works. This has included excavating and connecting to existing gullies and completing a vacuum excavation near live services. We have also started work on new footways in the area and installed new kerbs and edgings. These works will continue until mid-December.

Throughout November at Middelburg West, we carried out drainage and connection works, traffic management was switched so we could break out redundant kerbs and install new gullies. We began the widening of Middelburg Square West Road to its full width and installed temporary road markings. We then started the construction works for a new tabletop crossing on the road. We broke out redundant footways; vacuum excavated near live services and installed new street lighting ducts. We then installed new tactile and corduroy paving slabs, installed footway base, binder and surface course. Over the next month we will begin constructing further tabletop crossings; to safely complete this we will need to close off a section of Bouverie Road West eastbound. A diversion will be in place via Castle Hill Avenue. Traffic from Middelburg Square travelling up Bouverie Road West towards Tesco Express will not be affected. This will go ahead from Friday 28th November until Friday 19th December.

During November at Middelburg South we have been continuing with new carriageway works, traffic was temporarily diverted through the redundant bus station, and two parking spaces were temporarily suspended. Over the next month we will need to complete some overnight works in this area so we can install asphalt to the raised tabletop and ramps and install granite paving. Ample notice will be provided to residents and businesses before these works take place.



Tabletop crossing – Middelburg Square South

Shorncliffe Junction

As you may be aware we have started working along Shorncliffe junction. In this area we have successfully switched traffic management, erected safety fencing and slightly narrowed lanes. We have disconnected and removed redundant Belisha beacons and signs, broke out redundant kerbs and footways, and have removed redundant railings. We have installed new streetlighting ducts, installed and energised new streetlighting columns. Over the next upcoming month, we will be installing new kerbs and edgings, footway covers, tactile and corduroy paving slabs, new Belisha beacons and signs.



Current works at Shorncliffe Junction.

Cheriton Road

Along Cheriton Road we have been successfully continuing with the drainage works for the newly constructed rain gardens. We have excavated, installed new pipes, connected to sewer chambers and have filled areas with landscaping materials. Allowance for vacuum excavation took place near live services and we have begun installing kerb base ready for the installation of new kerbs. Over the next upcoming month, we will continue these works gradually down Cheriton Road, towards the town centre.



Newly constructed junction – Cooling Road.



Community works

Over the past month we have been in touch with local schools and community groups; we have some upcoming projects and opportunities we are very much looking forward to. An update on future projects will be published in the next newsletter.

If you have any concerns or queries or would like to know more about the scheme, please reach out to our local Public Liaison Officer. We would like everyone to feel a part of this scheme and have their voices heard.

For more information on the roads scheme, please visit Kent County Council's website.

www.kent.gov.uk/folkestoneabrighterfuture

For more information about Folkestone – A Brighter Future please visit Folkestone & Hythe District Council's website: www.folkestone-hythe.gov.uk/FABF

For any further enquiries, please send an email to Folkestone@jackson-civils.co.uk or call the Jackson PLO on 07974 416435.





Christmas Update

Dear Residents,

We would like to thank you all for your cooperation and understanding so far throughout the scheme.

All roads will be open for use during the Christmas holidays until we resume in the new year.

Works will be carried out until 23rd of December and will restart on the 5th of January 2026. If there are any concerns or queries you wish to share, please contact our Public Liaison Officer on [07974 416435](tel:07974416435).

Works have progressed well, with the newly constructed tabletop crossing at Middelburg West (Cheriton Gardens) which is now open for use. In this area we have also successfully carried out drainage works, installed new kerbs and new tarmac to footways and road.

New granite paving has been installed in Guildhall Street, and this repaved section will be open to pedestrians in the new year. Other repaving will be taking place along Guildhall Street, and this is scheduled to be complete in April 2026.

At Shorncliffe junction we have broken out redundant kerbs and footways, removed redundant railings, carried out drainage works, and have installed new kerbs and edgings. This section of the road is now open for use.

In the new year we will start works at the former bus station. We have already transferred all materials into the area and have dug trial holes. In January we will begin to undertake electrical connections, remove redundant planters, demolish existing bus shelters and planter walls, we will then begin carry out a vacuum excavation near live services.

For safety reasons we will have to close off the footpath and public toilets in this area whilst work is ongoing. The toilets will reopen at the end of the scheme. Alternative public toilets are available or the nearest council run facilities can be found at Pleydell Gardens (CT20 2DN) or at the Fish Market on The Stade (CT19 6AA). The toilets will also benefit from a refurbishment as part of the delivery of Bouverie Sq. and this is due to take place during late Spring of 2026.





In April we will be returning to the southern end of Radnor Park roundabout to tie in with Cheriton Road junction. We will be completing the remainder of the works including the finishing of cycle lanes, signalized crossing station approach and the new road layout.

Once again, we would like to say thank you for all your patience and hope you all have a Merry Christmas and a Happy New Year.

Kind regards

Jackson Civil Engineering.



Folkestone – A Brighter Future

Newsletter Issue 9



Aerial shot of the site compound and Folkestone.

To members of the public,

The Folkestone - A Brighter Future Scheme has progressed significantly over the recent months.

Cheriton Road

We have successfully completed the first phase of rain gardens along Cheriton Road. A rain garden is a small area planted with water-tolerant vegetation. Rain gardens collect surface run off – including rainwater - from nearby roads, filters pollutants, and provides a natural habitat for wildlife. Once all the rain gardens have been constructed in this area, we will plant a mix of wildflowers and 18 new trees. We aim to have these works complete by April 2026.



First section of rain gardens located at Cheriton Road

Shellons Street/Guildhall Street

Over the past month along Shellons/Guildhall Street we have been removing and re-laying new granite slabs, gradually working our way back towards shop entrances whilst maintaining access at all times. As you may have noticed we have opened a large section of this area creating wider access for pedestrians.

In February we will work our way up Shellons Street to the junction with Gloucester Place. This will involve switching the traffic management, erecting safety fencing, and installing three-way traffic



signals so we can construct a half-raised tabletop crossing. We will then need to carry out drainage works in the area by installing and connecting gullies to the existing connection.

Middelburg Square East

In January we carried out new carriageway works on Middelburg Square East. Asphalt was added to the newly constructed table ramps, traffic management was switched and safety fencing was erected. We broke out for new gullies and connections, and more asphalt was reinstated to the roads. Over the next week we will be carrying out new footway works by breaking out redundant kerbs and footway and removing redundant railings.



Traffic Management switched at Middelburg East – newly constructed tabletop crossing.

Middelburg Square South

In early December we carried out new footway works including the installation of granite flag paving and erected bus stop signage in the area. The permanent F2 bus shelter will be installed soon. In February we will be carrying out new carriageway works – including drainage works and the installation of new kerbs - at the entrance/exit of the Asda NCP carpark. These works will be carried out throughout the night to keep disruption to a minimum. The permanent bus shelter – F4 – will be installed in April 2026. We expect all permanent bus shelters at Middelburg Square to be installed by the end of April.

Middelburg Square West

Earlier this month we continued with drainage and road construction works. Traffic management was switched to facilitate this which involved lane closures to Middelburg Square, and the installation of footway signage. Safety fencing was erected so we could break out the redundant traffic island section.

In the coming month, old streetlights will be removed and new lights installed. New planters will also be constructed and filled with soil. We will also begin the construction works for the new rain

gardens by excavating and installing new pipes which will then be connected to the sewer chamber.

Bouverie Square Public Realm Area

January marked the start of work on the public realm area of Bouverie Square. In February we will begin work to install an infiltration tank at the former bus station. The infiltration tank will facilitate rainwater reuse to help water the eventual garden square. This process involves breaking out redundant concrete carriageway and kerbs and carrying out a vacuum excavation – a digging method that uses suction – at the site. We will then place and install the infiltration tank and backfill the remaining excavation.

Shorncliffe Road Junction

Throughout January we carried out new footway works and installed new kerbs, edgings and Belisha beacons. New street light columns were connected, and new tactile and corduroy paving slabs have also been installed. In February we will begin to install rain gardens along the road. To allow these works to take place we will need to close Cheriton Gardens and Manor Road at the Shorncliffe junction. This closure will be from the 26th of January until the 20th of February. apologise in advance for any inconvenience this may cause.



Resurfaced pavement, and Belisha Beacons at Shorncliffe junction.

Archaeology

The archaeology watching brief has resumed after the Christmas holidays, focusing more on Cheriton Road and Sandgate Road due to the excavations taking place. At this current time there is nothing to report on. Any findings will be featured both in this newsletter and in a separate report.



Community works

In January several representatives from Jackson Civil Engineering attended two career talks for year 8 students at Folkestone Academy and Turner Free School. Here they discussed the vast variety of job roles in the civil engineering industry, and how students could go about accessing these roles. A public engagement event also took place at Folkestone Town Hall with The Shepway Bus Users Group with Jackson discussing upcoming works and if any would affect any bus routes.

For more information on the roads scheme, please visit Kent County Council's website.

<https://www.kent.gov.uk/roads-and-travel/road-projects/planned-road-projects/folkestone-a-brighter-future>

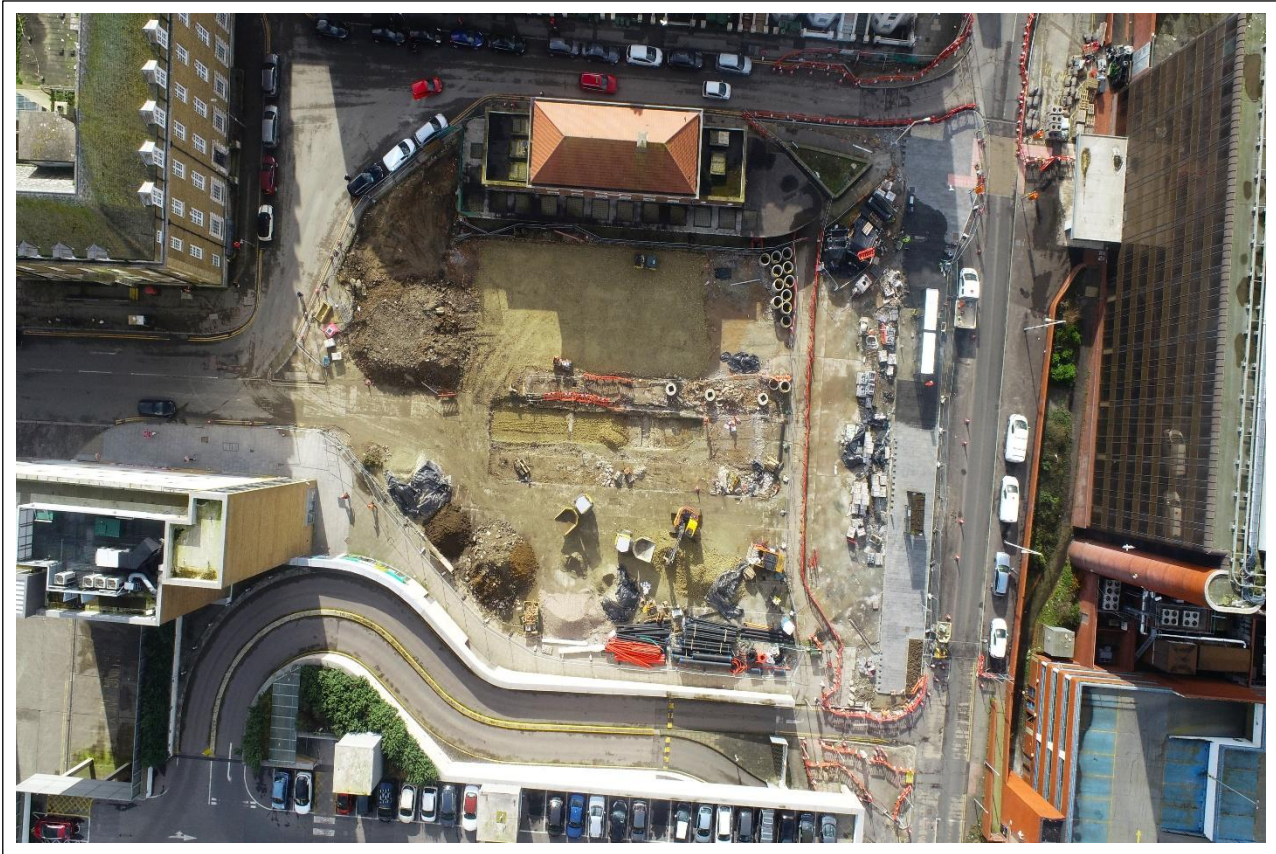
For more information about Folkestone – A Brighter Future please visit Folkestone & Hythe District Council's website www.folkestone-hythe.gov.uk/FABF

For any further enquiries, please send an email to Folkestone@jackson-civils.co.uk or call the Jackson PLO on 07974 416435



Folkestone – A Brighter Future

Newsletter Issue 10



An aerial view of the former bus station and new public realm area.

To members of the public,

The Folkestone - A Brighter Future Scheme has progressed significantly over the recent months.

Cheriton Road

Over the past month along Cheriton Road we have been continuing with the installation of rain gardens, and we have successfully made our way down towards the town centre. Over recent weeks we have carried out new footway works which have involved, installing traffic management, narrowing carriageway lanes slightly to allow safe working space. Parking bays were also suspended as our work area moved along the road. Once the preparation work was complete, the redundant footways were broken out, pavements were resurfaced, and new edgings installed.



Shellons Street/Guildhall Street

Most of the new granite paving along Shellons Street and Guildhall Street is complete, with just a small section left to complete next to Mayfair Newsagents and Shepway Taxis. We aim to have this completed by the end of March. We will always provide access to and from businesses while we carry out works.

On Monday 9th of March to Friday 13th March, we will be carrying out overnight works along Shellons Street Westbound from Grace Hill roundabout to the junction with Middelburg Square. This road will be closed from the hours of 21:00 and 05:00 so we can safely carry out these works. Over five consecutive nights we will be surfacing the road, installing road markings and installing traffic signals at the pedestrian crossing. We will also be installing high friction surfacing which is an anti-skid road treatment which will create a safer environment for road users and pedestrians. During the work vehicles will be diverted via Foord Road, Radnor Park Road, left turn along Cheriton Road, towards the town centre.

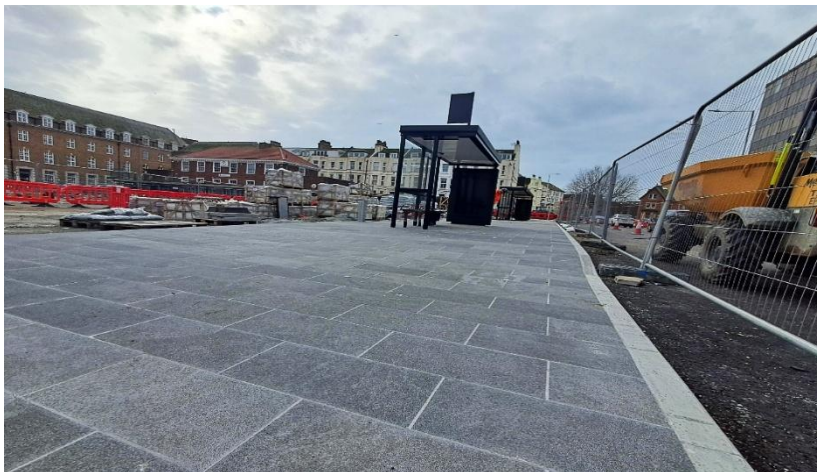
Middelburg Square East

At Middelburg Square East we have continued widening the kerb line to facilitate the new footpath. We have installed new footway drainage and are now preparing the area for tarmac which will be installed the end of February. Once the tarmac is laid, we will then begin to install paving similar to the paving outside of Primark.



Middelburg Square South

Along Middelburg Square South we have continued carrying out footway works, we have almost completed the installation of granite flag paving, this area will be accessible for pedestrians at the end of this month (February). The new F1 and F2 bus stops have now been installed and will be in



action on Monday the 2nd of March. Stagecoach staff will be onsite on Monday to help passengers with any queries.

A new planter has been excavated and installed in this area, topsoil has also now been installed and is ready for planting which will commence in Spring 2026.

Middelburg Square West

At Middelburg Square South we have been continuing with drainage and road construction works. Safety fencing was erected; road and footway signage was installed along with gullies for highway drainage. We have begun constructing new rain gardens in the redundant traffic island excavated this area and then installing new pipes. We also broke out redundant tarmac for new island

planters, and topsoil was installed. Bouverie Road West, westbound and Cheriton Place will be closed from Monday 2nd of March until Friday 24th of April. This closure is necessary due to new drainage, road and footway works that are required to create a safer environment for pedestrians and road users. A diversion will be in place via Cheriton Gardens, Shorncliffe Road, left at the roundabout down Castle Hill Avenue and then onto Sandgate Road. Cheriton Place will temporarily be made two ways; vehicles will be able to enter and exit from Sandgate Road. As Cheriton Place is a narrow road, all parking bays will be temporarily suspended during this time. Pedestrians will still be able to access Cheriton Place, travelling from Bouverie Road West towards the town centre. All businesses will remain open as usual.

Bouverie Square Public Realm Area

The public toilets at Bouverie Square remain closed and pedestrian access to these will be closed from Monday 2 March until these reopen. The toilets are undergoing significant refurbishment and will open in late Spring.



An infiltration tank will be installed in Bouverie Square next month. In addition, further drainage works will be carried out, kerb line preparations will take place, and paving formation layers will also be installed.

Shorncliffe Road Junction

At the Shorncliffe junction we have carried out drainage works, involving the installation of new rain gardens.

Southern Water installed new pipes and gullies and connected these to the sewer. Investigation works near live services have been undertaken, and asphalt was installed to footways and roads. New footway works were also carried out, Cheriton Road Northbound was closed and a diversion was provided. Redundant kerbs and footways were broken out and new kerbs and edgings were then installed. Belisha beacons and signs were also installed, as were new streetlight columns.

Next month Manor Road will be closed at the end nearest Shorncliffe Junction from the 11th of March until the 30th of March. This closure is necessary for the next stage of our work to improve Shorncliffe Junction. Vehicles will still be able to access Manor Road from the other end of the street.

Sandgate Road

The installation of new granite paving to the entrance of the pedestrianised area of Sandgate Road has been successful so far with the majority of the area repaved. At the end of February, we will switch the pedestrian route and focus on paving the area adjacent to Greggs, while maintaining access at all times. We aim to have these works complete by the end of March.

Archaeology

Excavations have been carried out over recent months in the Bouverie Square Public Realm area, and it is hoped that the remains of the WW2 air raid shelter may be revealed. Yet no significant archaeology has been observed.

During the trenching along Cheriton Road for the new rain gardens, fragments of bronze age pottery were found, which date back to 1000BC. Excavations are ongoing in this area, so it is possible that more evidence of prehistoric Folkestone may be revealed.

Community works

Jackson donated soil to The Locavore Project, which is a not-for-profit local organisation that is developing a community garden project on a plot of land near Folkestone. Two truckloads worth of topsoil was donated to the local charity who will use it for their community project and share it with nearby community groups, including the Nepalese community. The Locavore project operates through bringing people together to grow, cook and share food. They work to provide access to nature and green spaces, increase food education, empower and support the local community to grow their own food.

Jackson have recently been liaising with local schools and are looking forward to further exciting opportunities coming up over the next month.



For more information on the roads scheme, please visit Kent County Council's website.

www.kent.gov.uk/folkestoneabrighterfuture

For more information about Folkestone – A Brighter Future please visit Folkestone & Hythe District Council's website www.folkestone-hythe.gov.uk/FABF

For any further enquiries, please send an email to Folkestone@jackson-civils.co.uk or call the Jackson Public Liaison Officer on 07974 416435



Folkestone – A Brighter Future

Newsletter Issue 11



Middelburg Square South – newly constructed footways and bus shelters.

To members of the public,

The Folkestone - A Brighter Future Scheme has progressed well with noticeable updates to roads and public realm areas.

Cheriton Road

Works along Cheriton Road have been successful. This month we have constructed new footways, carried out drainage works, gas diversions and have installed rain gardens. Most of the rain gardens have now been constructed and we will finish installing the final ones near Connaught Road by the end of April 2026. After completion of the rain gardens, we will work on footways at the entrance of Connaught Road. This work will mean Cheriton Road will have to be temporarily narrowed. Connaught Road will remain open, and safe pedestrian diversions will be provided. In early April along Cheriton Road, an update will be sent out with further details and images attached.

Shorncliffe Junction

Our traffic management changed at Shorncliffe Junction in March. We closed Manor Road northbound so we could continue working on improvements at the junction. A vehicle diversion has been provided via Ingles Road and Bouverie Road West, and this will reopen on the 10th of April.

Throughout April we will carry out landscaping works to planted areas, install paving slabs and set footway covers. Towards the end of April there will be a final series of overnight works at the Shorncliffe Junction. These works will take place for seven weeknights. A letter will be distributed nearer the time to nearby residents and businesses containing details of works and confirmed dates.

Newly constructed tabletop crossing – Shorncliffe junction



Station Approach / Radnor Park Roundabout

The final remaining work on station approach and Radnor Park roundabout is starting on Monday the 13th of April and will run until July 2026. During this time there will be four-way traffic signals in place for safety.

We will organise traffic management, safety fencing, and footway signage before starting works. Then we will disconnect and remove redundant zebra crossing beacons and break out redundant islands. Drainage and footway works will also be carried out, and pedestrian diversions will be provided with adequate signage. These works will first be completed at Station Approach and then at Radnor Park roundabout. Improvements to cycle lanes will be made and the final surfacing of roads will be carried out.

At the end of this period all work in this area for the Folkestone – A Brighter Future project will be complete.

Shellons Street / Guildhall Street

Along Shellons Street walkways have been reopened and we have completed the granite paving up to the shop fronts. From next week until July 2026 we will start works along Guildhall Street. During this time, we will begin constructing four planters which will be landscaped during the next planting season. This will create a more attractive and inviting environment, which will hopefully entice more people to this area of the town centre. Access will always be provided to residents and businesses during this time.

Middelburg Square East

We have continued installing the flag paving outside of Bouverie Square Shopping Centre. The pedestrian footpath has been moved back towards the centre while we complete the final phases of paving. Grey Cranesbill and Rose Campion flowers have been planted in the newly constructed planters. Over the next month we will continue installing new kerbs and paving, completing drainage works and breaking out redundant kerbs and footways.

Middelburg Square South

The footpath adjacent the public realm area has been opened for pedestrian use and new bus stops are now in action. We have since continued to work on the footways at the Asda carpark

entrance/exit, redundant paving has been broken out, and landscaping works have started in the newly constructed planters.

Middelburg Square West

Last month we saw the temporary closure of Bouverie Road West and Cheriton Place. We have been making progress with new drainage, road and footway works and this area is on schedule to be re-opened on the 24th of April. Works include breaking out old paving on footways in preparation for new slabs. The island at the Bouverie Road West entrance has also been resurfaced, new kerbs and edgings have been installed, and planters have been constructed and filled with soil.



Bouverie Square Public Realm Area

Throughout this period, we have continued to breakout the existing concrete pavement and place aggregate ready for asphalt to enable granite paving. We have started the drainage and ducting to facilitate the public realm area. This will continue through April.

Sandgate Road

Works are progressing on Sandgate Road with all the granite paving having been installed with only a small area of repaving needed near Greggs still to be done. Excavations were carried out and redundant paving was broken out and is being replaced. The pedestrian route was changed, with safe walkways provided and plenty of pedestrian signage to alleviate confusion. We are now working on the final planter in that area. Once all the planters are built, we will fill them with soil ready for landscaping works. Some bike hoops have now been installed and foundations for bins, benches and further bike hoops will be carried out over April.

Archaeology

Archaeologists from Kent County Council have been assigned to the Folkestone – A Brighter Future project to record any historical findings uncovered during excavations. The archaeologists have been present on site during excavations and have recorded small findings in various areas.

These include:

- Bronze age pottery uncovered along Cheriton Road during the installation of rain gardens
- Brick post-medieval footings (part of a historic foundation) uncovered in Sandgate Road
- Three chalk backfilled WWII features which appear to run into a bunker uncovered in Bouverie Square

These findings are being studied in more detail and further information will be shared in the next newsletter along with any new discoveries.

Community works

During March a student from Turner Schools completed a weeks' worth of work experience with Jackson's on the Folkestone site. The student was able to observe and understand how a site runs, and how to safely carry out works in such a busy area. Experiencing this hopefully furthered their knowledge on engineering and will assist them with future opportunities. Jackson's have also been putting together activities for upcoming school visits next month.

Public engagement with local businesses and stakeholders was also carried out in March, informing residents of upcoming works and updates. Numerous letter drops took place, containing further details and dates of works to be expected to those directly affected.

For more information on the roads scheme, please visit Kent County Council's website.

www.kent.gov.uk/folkestoneabrighterfuture

For more information about Folkestone – A Brighter Future please visit Folkestone & Hythe District Council's website www.folkestone-hythe.gov.uk/FABF

For any further enquiries, please send an email to Folkestone@jackson-civils.co.uk or call the Jackson Public Liaison Officer on 07974 416435